

Panasonic
ideas for life

PT-D3500U

DLP™-Based XGA Projector

3500lm XGA

**Full-Featured,
High-Quality Performance
a Full Class Above**



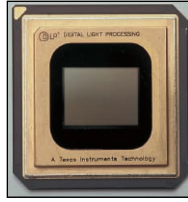
Putting High Quality and Reliability Within Your Budget

The PT-D3500U inherits the overall concept that made the 5,000 lumens PT-D5500U so popular, and makes it even easier to enjoy superior performance and reliability in a high-quality projector. Featuring Texas Instruments Digital Light Processing™ technology, the PT-D3500U projects truly beautiful images suitable for a host of applications. Use the PT-D3500U in classrooms and meeting rooms, stores and showrooms, or restaurants and other public spaces. It is especially recommended for demanding applications. The PT-D3500U comes equipped with a variety of terminals for extra flexibility. It offers wired LAN capability. It's small in size, reliable, and requires little maintenance. With DLP™ system image quality and all these features, the PT-D3500U is highly affordable.

High Image Quality

Sophisticated Single-Chip DLP™ System

The PT-D3500U features a single-chip DLP™ system with a 0.7-inch XGA Digital Micromirror Device. Panasonic further enhanced the performance, reliability, and precision of this optical engine, for instance, by employing a coreless air bearing motor for the color wheel. The result is a single-chip DLP™ projection system that stands a full class above other single-chip types.



Ultra Bright 3,500 Lumens

The high-precision DLP™ system combines with a high-power UHM™ lamp and sophisticated optical technology to project super-bright images. The crisp, 3,500-lumen images are easy to see when projected onto a large screen, even in well-lit rooms.

High 1,600:1 Contrast Ratio

Its high-contrast combines with an outstanding brightness for crisp, high-resolution images in virtually any viewing environment. Contrast can be switched between High and Normal as conditions require.

High Uniformity of Brightness and Color

The PT-D3500U's outstanding brightness and contrast ratio assures high uniformity of brightness and color, resulting in vivid and natural image.

High Reliability and Easy Maintenance

Dustproof Design with Sealed Optical Block

The effect of dust has been minimized by completely sealing the optical block. The dust-free design helps ensure that this DLP™ projector will continue to deliver crisp, sharp, high-resolution images over an extended service life.

Easily Replaceable Dust Filter and Lamp

Dust filter is replaced from the front and the lamp is replaced from the back panel. The dust filter and lamp are easily replaced even after the PT-D3500U is installed.



Flexible System Applications

Lens-Centered Design

A lens-centered, symmetrical design provides flexible system layout, eliminating the need for any special considerations when planning the installation site.

Horizontal/Vertical Lens Shift

A wide adjustment range of the horizontal/vertical lens shift assures distortion free images and adds convenience and versatility. (Horizontal : manual, vertical : powered)



Optional Lenses For Various Venues

Five optional lenses with different throw distances—the same as those used in the PT-D5500U—are available in addition to the supplied lens. These powered zoom/focus lenses enable the projector to perform superbly in an array of projection environments.

Easy Lens Replacement

With the bayonet system, lenses can be attached and detached with one-touch ease.



Mechanical Lens Shutter

A mechanical lens shutter minimizes annoying light leakage when the PT-D3500U is on standby or temporarily not in use, such as during a meeting. This is a feature not generally offered in projectors of this class.

Flexible Angle Setting

The PT-D3500U can be rotated vertically. This means you can install it at any up-and-down angle you wish to accommodate different installation conditions.



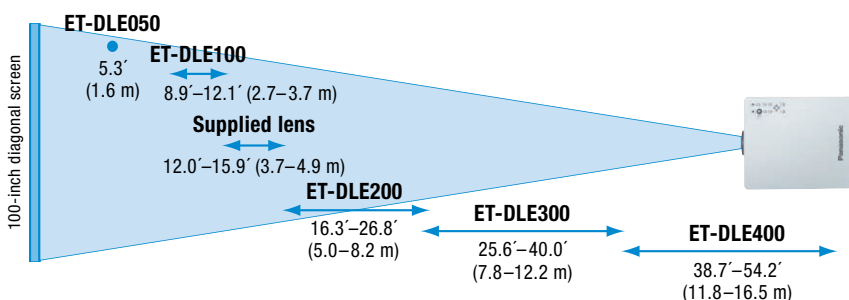
Multiple Terminals with AV Switcher Capability

The PT-D3500U comes with a full array of input terminals, including a DVI-D connector and audio input/output terminals. This eliminates the need for additional equipment, such as a DVI-RGB converter or AV switcher, for system expansion.



Terminals include an HDCP-compliant DVI-D input connector

Projection Range Example



Networking

Wired LAN System

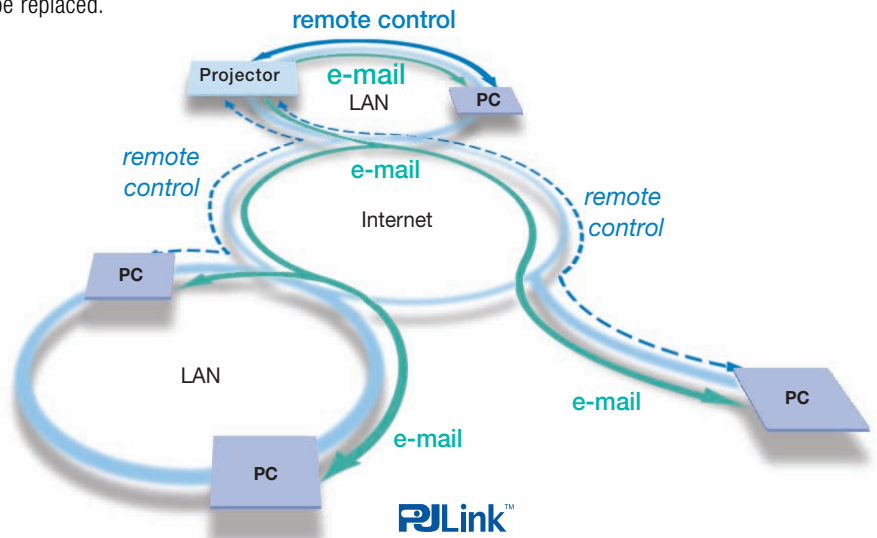
The PT-D3500U comes standard-equipped with a LAN connector for 10Base-T/100Base-TX connection. Simply hook it up to your existing LAN network for easy remote control and/or monitoring. System administrators will appreciate this feature when using the PT-D3500U as a fixed-installation projector.

Web Browser Control/Monitoring

You can operate the PT-D3500U by remote control or monitor its status over a LAN network, because it's easily done using the computer's familiar Web browser.

E-Mail Message Alert

The PT-D3500U automatically sends an e-mail message to notify the operator when the operating condition changes or a lamp needs to be replaced.



Other Valuable Features

- Direct Power Off
- Quiet operation: 29 dB (in low lamp mode)
- Anti-theft features: password, operation key lock, Kensington lock and security chain opening
- 6 colors-matching function (red, green, blue, cyan, magenta, yellow)
- ID assignment for up to 64 units
- Digital vertical keystone correction
- 3x digital zoom
- Built-in test pattern
- Selectable 9-language on-screen menu (English, German, French, Spanish, Italian, Russian, Japanese, Chinese, Korean)
- HDCP (High-Bandwidth Digital Content Protection) compliant

PJLink™

PJLink Function

Projectors equipped with the PJLink™ function can be used together on the same wired LAN system, regardless of model or brand, for centralized control and monitoring. This standard was established by the Japan Business Machine and Information System Industries Association (JBMA).

Ecology-Conscious Design

Panasonic meticulously works to minimize environmental impact in the product design, production and delivery processes, and in the performance of the product itself over its life cycle. The PT-D3500U reflects the following ecological considerations.

- Lead-free solder is used to mount components to the printed circuit boards.
- No halogenated flame retardants are used in the cabinet.
- The non-coated cabinet enables easy recycling.
- Lead-free glass is used for the lens.
- The packing case and operating manual are made from recycled paper.
- Lamp power switching further reduces power consumption.
- Auto Power Save activates standby mode when no signal is input.

Specifications

Power supply 120 V AC, 50/60 Hz
Power consumption 400 W (15 W in standby mode with fan stopped)
DMD™ device 4:3 aspect ratio
Panel size 0.7" (17.78 mm) diagonal
Display method DMD™ x 1, DLP™ system
Pixels 786,432 (1,024 x 768) x 1, total of 786,432 pixels
Lens Powered zoom/focus lenses (1–1.32), F 1.8–2.5, f 25.6–33.8 mm
Lamp 300 W UHM™ lamp
Screen size 50–600 inches
Brightness 3,500 lumens (contrast mode: high)
Contrast 1,600:1 (full on/full off, contrast mode: high)
Resolution
RGB 1,024 x 768 pixels (1,600 x 1,200 pixels compatible, compression mode)
Video 560 TV lines
Scanning frequency
RGB Horizontal: 15–91 kHz, Vertical: 50–85 Hz, Dot clock: Less than 108 MHz
DVI-D EDID1: 480p, 576p, 720/60p, 1080/60i, 1080/50i
 EDID2: VGA480/60, SVGA/60, XGA/60, XGA/70, XGA/85, SXGA/60
YPbPr (YCaCb) 480i: fh 15.73 kHz; fv 59.94 Hz, 576i: fh 15.63 kHz; fv 50 Hz, 480p: fh 31.5 kHz; fv 59.94 Hz, 576p: fh 31.25 kHz; fv 50 Hz, 720/60p: fh 45 kHz; fv 60 Hz, 1035/60i: fh 33.75 kHz; fv 60 Hz, 1080/60i: fh 33.75 kHz; fv 60 Hz, 1080/50i: fh 28.13 kHz; fv 50 Hz
S-Video/Video Horizontal: 15.75/15.63 kHz, Vertical: 59.94/50 Hz (NTSC, NTSC4.43, PAL, PAL60, PAL-M, PAL-N, SECAM)
Optical axis shift Horizontal (manual) and vertical (powered), horizontal: 6:4–4:6, vertical: 0:10–10:0
Keystone correction range Vertical: ±30°
 Ceiling/floor, front/rear
Installation
Terminals
DVI-D IN DVI-D 24-pin x 1, HDCP-compliant
DVI-D AUDIO IN M3 (L, R) x 1, 0.5 Vrms
RGB1 IN 5 BNC x 1
R, G, B G: 0.7 Vp-p (G: 1.0 Vp-p for sync on G), 75 ohms, B, R: 0.7 Vp-p, 75 ohms
 HD/SYNC, VD: TTL (positive/negative)
Y, Pb, Pr Y: 1.0 p-p (sync signal included), 75 ohms, Pb, Pr: 0.7 Vp-p, 75 ohms
RGB1 AUDIO IN M3 (L, R) x 1, 0.5 Vrms
RGB2 IN D-sub HD 15-pin x 1
R, G, B 0.7 Vp-p (G: 1.0 Vp-p for sync on G), 75 ohms, B, R: 0.7 Vp-p, 75 ohms
 HD/SYNC, VD: 75 ohms, TTL (positive/negative polarity)
Y, Pb, Pr Y: 1.0 p-p, 75 ohms, Pb, Pr: 0.7 Vp-p, 75 ohms
RGB2 AUDIO IN M3 (L, R) x 1, 0.5 Vrms
VIDEO IN RCA pin x 1, 1.0 Vp-p, 75 ohms
VIDEO AUDIO IN RCA pin (L, R) x 1, 0.5 Vrms
S-VIDEO IN Mini DIN 4-pin x 1, Y: 1.0 Vp-p, C: 0.286 Vp-p, 75 ohms
S-VIDEO AUDIO IN RCA pin (L, R) x 1, 0.5 Vrms
AUDIO OUT M3 (L, R) x 1, 0–2.0 Vrms (variable)
SERIAL IN D-sub 9-pin x 1 (RS-232C compliant) for external controller
REMOTE 1 IN M3 jack x 1 for wired remote control
REMOTE 2 IN D-sub 9-pin x 1 for external control (parallel)
LAN RJ-45 x 1 (compliant with PLink™)

Power cord length 9.8' (3.0 m)
Cabinet material Molded plastic (PC/ABS)
Dimensions (W x H x D) 13-1/16" x 6-5/8" x 16-23/32"
 (332 x 168 x 425 mm)
Weight 17.4 lbs (7.9 kg)
Operating temperature 32–104°F (0–40°C)
Operating humidity 20%–80% (no condensation)
Remote Control Unit
Power supply 3 V DC (AAA battery x 2)
Operation range* Approx. 23' (7 m) when operated from directly in front of the signal receptor
Dimensions (W x H x D) 1-3/4" x 5-11/16" x 29/32"
 (45 x 145 x 23 mm)
Weight Approx. 3.4 ozs. (95 g) (including batteries)
 * Operation range differs depending on the environment.

Supplied Accessories

- Power cord
- Wired/wireless remote control unit
- Batteries for remote control (x 2)

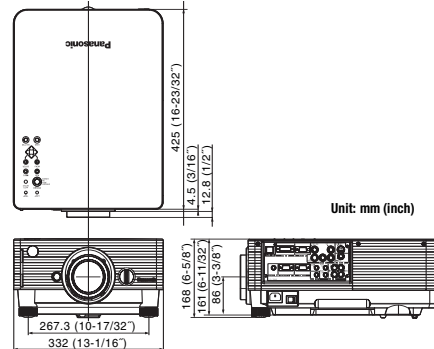
Optional Accessories

- ET-LAD35 Replacement lamp unit
- ET-LAD35L Replacement long-life lamp unit
- ET-PKD35 Ceiling mount bracket
- ET-PKD35S Ceiling mount bracket for low ceilings
- ET-DLE100 Zoom lens (1.3–1.8:1)
- ET-DLE200 Zoom lens (2.5–4.0:1)
- ET-DLE300 Zoom lens (3.7–5.7:1)
- ET-DLE400 Zoom lens (5.7–8.0:1)
- ET-DLE050 Fixed-focus lens (0.8:1)
- ET-RMRC2 Wireless mouse receiver

NOTES ON USE

- The projector uses a high-voltage mercury lamp that contains high internal pressure. This lamp may break, emitting a large sound, or fail to illuminate, due to impact or extended use. The length of time that it takes for the lamp to break or fail to illuminate varies greatly depending on individual lamp characteristics and usage conditions.
- The brightness of the lamp will gradually decrease with use.

Dimensions



Optional Accessories



Projection Distance

| Screen size (inch. diagonal) | ET-DLE100 Zoom lens (1.3–1.8:1) | | Supplied lens (1.8–2.5:1) | | ET-DLE200 Zoom lens (2.5–4.0:1) | | ET-DLE300 Zoom lens (3.7–5.7:1) | | ET-DLE400 Zoom lens (5.7–8.0:1) | | ET-DLE050 Fixed-focus lens (0.8:1) |
|------------------------------|---------------------------------|--------------|---------------------------|--------------|---------------------------------|---------------|---------------------------------|---------------|---------------------------------|---------------|------------------------------------|
| | min. | max. | min. | max. | min. | max. | min. | max. | min. | max. | |
| 50 | 1.34 / 4.4 | 1.81 / 5.9 | 1.81 / 5.9 | 2.40 / 7.9 | 2.46 / 8.1 | 4.05 / 13.3 | 3.84 / 11.0 | 6.03 / 19.8 | 5.94 / 19.5 | 8.31 / 27.3 | 0.79 / 2.6 |
| 60 | 1.61 / 5.3 | 2.19 / 7.2 | 2.18 / 7.2 | 2.89 / 9.5 | 2.96 / 9.7 | 4.87 / 16.0 | 4.63 / 15.2 | 7.26 / 23.8 | 7.11 / 23.3 | 9.95 / 32.6 | 0.96 / 3.1 |
| 70 | 1.89 / 6.2 | 2.56 / 8.4 | 2.55 / 8.4 | 3.38 / 11.1 | 3.46 / 11.4 | 5.69 / 18.7 | 5.43 / 17.8 | 8.49 / 27.9 | 8.28 / 27.2 | 11.60 / 38.1 | 1.12 / 3.7 |
| 80 | 2.17 / 7.1 | 2.93 / 9.6 | 2.92 / 9.6 | 3.87 / 12.7 | 3.97 / 13.0 | 6.52 / 21.4 | 6.22 / 20.4 | 9.72 / 31.9 | 9.45 / 31.0 | 13.24 / 43.4 | 1.29 / 4.2 |
| 90 | 2.44 / 8.2 | 3.30 / 10.8 | 3.29 / 10.8 | 4.36 / 14.3 | 4.47 / 14.7 | 7.34 / 24.1 | 7.02 / 23.0 | 10.96 / 36.0 | 10.62 / 34.8 | 14.89 / 48.9 | 1.45 / 4.8 |
| 100 | 2.72 / 8.9 | 3.68 / 12.1 | 3.66 / 12.0 | 4.85 / 15.9 | 4.98 / 16.3 | 8.17 / 26.8 | 7.81 / 25.6 | 12.19 / 40.0 | 11.79 / 38.7 | 16.53 / 54.2 | 1.62 / 5.3 |
| 120 | 3.27 / 10.7 | 4.42 / 14.5 | 4.41 / 14.5 | 5.83 / 19.1 | 5.99 / 19.7 | 9.82 / 32.2 | 9.40 / 30.8 | 14.65 / 48.1 | 14.14 / 46.4 | 19.82 / 65.0 | 1.95 / 6.4 |
| 150 | 4.10 / 13.5 | 5.54 / 18.2 | 5.52 / 18.1 | 7.30 / 24.0 | 7.50 / 24.6 | 12.29 / 40.3 | 11.79 / 38.7 | 18.35 / 60.2 | 17.65 / 57.9 | 24.75 / 81.2 | 2.45 / 8.0 |
| 200 | 5.48 / 18.0 | 7.40 / 24.3 | 7.38 / 24.2 | 9.75 / 32.0 | 10.02 / 32.9 | 16.41 / 53.8 | 15.76 / 51.7 | 24.51 / 80.4 | 23.52 / 77.2 | 32.98 / 108.2 | 3.28 / 10.8 |
| 250 | 6.87 / 22.6 | 9.26 / 30.4 | 9.23 / 30.2 | 12.20 / 40.0 | 12.54 / 41.1 | 20.53 / 67.4 | 19.74 / 64.8 | 30.67 / 100.6 | 29.39 / 96.4 | 41.20 / 135.2 | - / - |
| 300 | 8.25 / 27.1 | 11.12 / 36.5 | 11.09 / 36.4 | 14.65 / 48.1 | 15.06 / 49.4 | 24.65 / 80.9 | 23.71 / 77.8 | 36.83 / 120.8 | 35.27 / 115.7 | 49.43 / 162.2 | - / - |
| 400 | 11.02 / 36.2 | 14.84 / 48.7 | 14.80 / 48.6 | 19.55 / 64.1 | 20.11 / 66.0 | 32.90 / 107.9 | 31.66 / 103.9 | 49.15 / 161.3 | 47.04 / 154.3 | 65.90 / 216.2 | - / - |
| 500 | 13.78 / 45.2 | 18.56 / 60.9 | 18.51 / 60.7 | 24.45 / 80.2 | 25.15 / 82.5 | 41.14 / 135.0 | 39.61 / 130.0 | 61.47 / 201.7 | 58.85 / 193.1 | 82.38 / 270.3 | - / - |
| 600 | 16.55 / 54.3 | 22.28 / 73.1 | 22.23 / 72.9 | 29.35 / 96.3 | 30.19 / 99.0 | 49.38 / 162.0 | 47.56 / 156.0 | 73.80 / 242.1 | 70.67 / 231.9 | 98.87 / 324.4 | - / - |



Panasonic Broadcast & Television Systems Company
 Presentation Systems Group
 1-800-528-8601
 www.panasonic.com/projectors

Headquarters
 1 Panasonic Way, 4E-7
 Secaucus, NJ 07094
 201 348 5300

Panasonic Canada Inc.
 5770 Ambler Drive
 Mississauga, Ontario
 Canada L4W 2T3
 905 624 5010

Please contact Panasonic or your dealer for a demonstration.



Weights and dimensions shown are approximate. Specifications are subject to change without notice. This product may be subject to export control regulations. UHM is a trademark of Matsushita Electric Industrial Co., Ltd. VGA and XGA are trademarks of International Business Machines Corporation. Windows and PowerPoint are either registered trademarks or trademarks of Microsoft Corporation in the United States and/or other countries. All other trademarks are the property of their respective trademark owners. Projection images simulated.
 PT-D3500U1-05JUL30K Printed in Japan.